

**Cost Effective Compact RFI Filter IEC Connector Package**

# EEA, EEB Series



**UL Recognized**  
**CSA Certified**  
**VDE Approved**



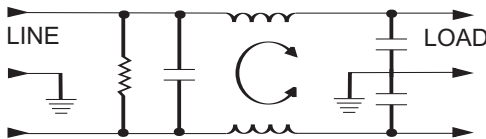
## EEA Series

This is a new generation of compact RFI filters with IEC socket. A totally new design in both the internal structure and manufacturing process makes this series cost effective and compact. The EEA series supersedes the EF series by providing superior performance, particularly in the common mode at low frequencies. Mechanically, its slimmer size makes it compatible with all similar filters on the market.

## EEB Series

This is a new generation of compact RFI filters with IEC socket. A totally new design in both the internal structure and manufacturing process makes this series cost effective and compact. Electrically, the EEB provides enhanced differential mode performance compared to both the EEA and EF series. Mechanically, its slimmer size makes it compatible with all similar filters on the market.

## Electrical Schematic



Resistor location for reference only.

## Specifications

<b>Maximum leakage current, each line-to-ground</b>	
@ 120 VAC 60 Hz:	.22 mA
@ 250 VAC 50 Hz:	.38 mA
<b>Hipot rating (one minute):</b>	
line-to-ground	2250 VDC
line-to-line	1450 VDC
<b>Operating frequency:</b>	50/60 Hz
<b>Rated voltage (max.):</b>	250 VAC

### Minimum insertion loss in dB:

Line-to-ground in 50 ohm circuit

Current Rating	Frequency-MHz							
	.01	.05	.1	.15	.5	1	5	10

#### EEA Models

1A	12	23	29	32	41	47	47	47	40
3A	-	10	15	19	30	36	48	50	47
6A	-	1	4	10	22	28	42	48	47
10A	-	1	3	5	14	20	32	38	47

#### EEB Models

1A	12	23	29	32	41	47	47	47	40
3A	-	10	14	18	30	36	48	50	47
6A	-	1	4	10	22	28	42	48	47
10A	-	1	3	5	14	20	32	38	47

Line-to-line in 50 ohm circuit

Current Rating	Frequency-MHz						
	.5	1	1.5	3	5	10	30

#### EEA Models

1A	1	9	19	32	42	45	40
3A	2	4	6	20	35	45	40
6A	2	4	6	6	24	40	40
10A	1	4	5	5	5	30	40

Current Rating	Frequency-MHz						
	.01	.15	.5	1	3	5	10

#### EEB Models

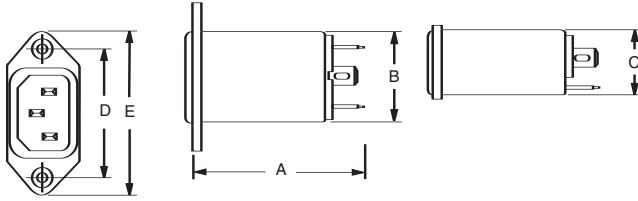
1A	1	3	14	23	41	47	50	44
3A	1	2	11	14	25	38	44	40
6A	1	2	10	14	20	33	42	40
10A	1	2	10	16	19	19	39	40

**Cost Effective Compact RFI Filter IEC Connector Package (Continued)**

# EEA, EEB Series

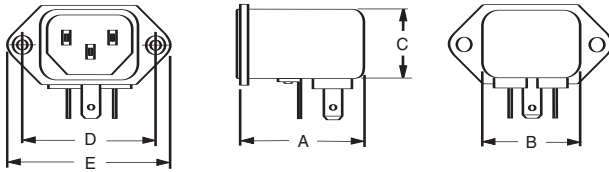
## Case Styles

### EEA1/EEB1 (front or back mounting)

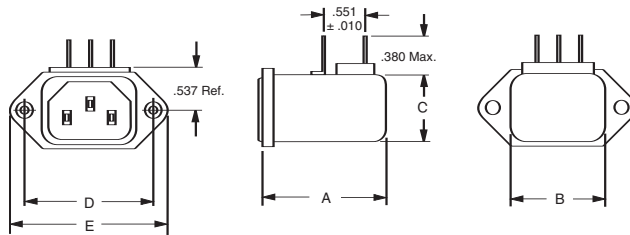


Typical dimensions:  
Terminals: .250 [6.35] (3) Holes: .07 [1.8] Dia.(2) Slot: .07 x .16 [1.8 x 3.8] (1)

### EEA2/EEB2 (back mount only)

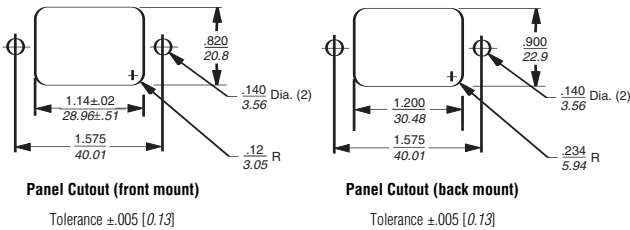


### EEAP/EEBP (back mount only)



Typical dimensions:  
Mounting holes: .132 [3.35] Dia. (2) with .236 Dia. x 90° countersunk for #4 Flathead Screw.

## Recommended Panel Cutouts



## Case Dimensions

Part No.	A (max)	B (max)	C (max)	D $\pm .010$ $\pm .25$	E (max)
EEA1	2.15 54.6	1.12 28.4	0.81 20.6	1.575 40.01	1.98 50.3
EEA2	1.54 39.1	1.12 28.4	0.81 20.6	1.575 40.01	1.98 50.3
EEAP	1.54 39.1	1.12 28.4	0.81 20.6	1.575 40.01	1.98 50.3
EEB1	2.15 54.6	1.12 28.4	0.81 20.6	1.575 40.01	1.98 50.3
EEB2	1.54 39.1	1.12 28.4	0.81 20.6	1.575 40.01	1.98 50.3
EEBP	1.54 39.1	1.12 28.4	0.81 20.6	1.575 40.01	1.98 50.3

## Part Numbers

1EEA1	1EEB1
1EEA2	1EEB2
1EEAP	1EEBP
3EEA1	3EEB1
3EEA2	3EEB2
3EEAP	3EEBP
6EEA1	6EEB1
6EEA2	6EEB2
6EEAP	6EEBP
10EEA1	10EEB1
10EEA2	10EEB2
10EEAP	10EEBP

Line Cord No.	GA400
Insulating Boot No.	FA601

## EEAP/EEBP Model PCB Layout

